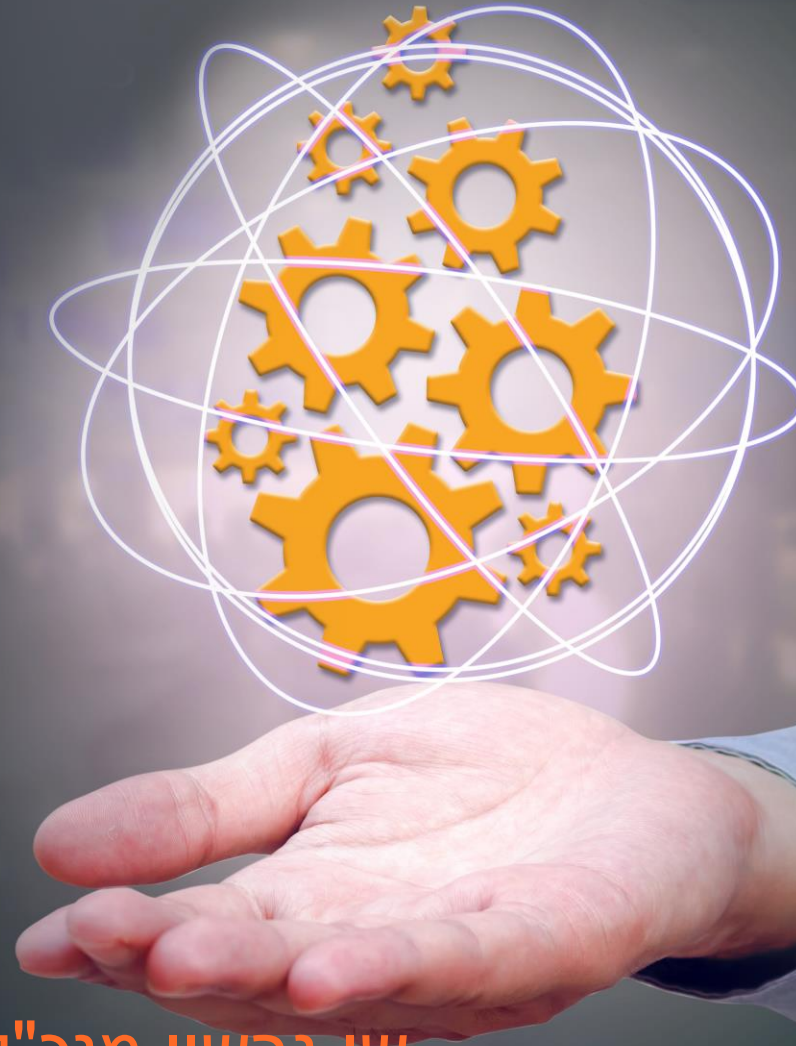




**CONTEL
TECHNOLOGIES**
for Smart Manufacturing

שיפור נצילות נכסי המפעל באמצעות טכנולוגיות חדשות



שי גרשון, מנכ"ל משותף קבוצת קונטאל טכנולוגיות

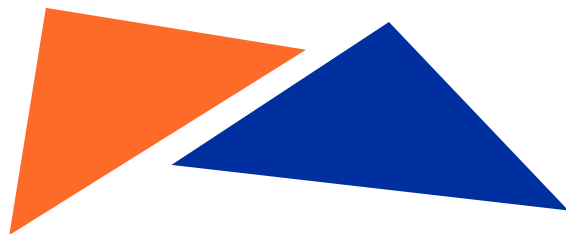
shai@contel.co.il 03- 9260300



**CONTEL
TECHNOLOGIES**
for Smart Manufacturing

What Make you Smart ?

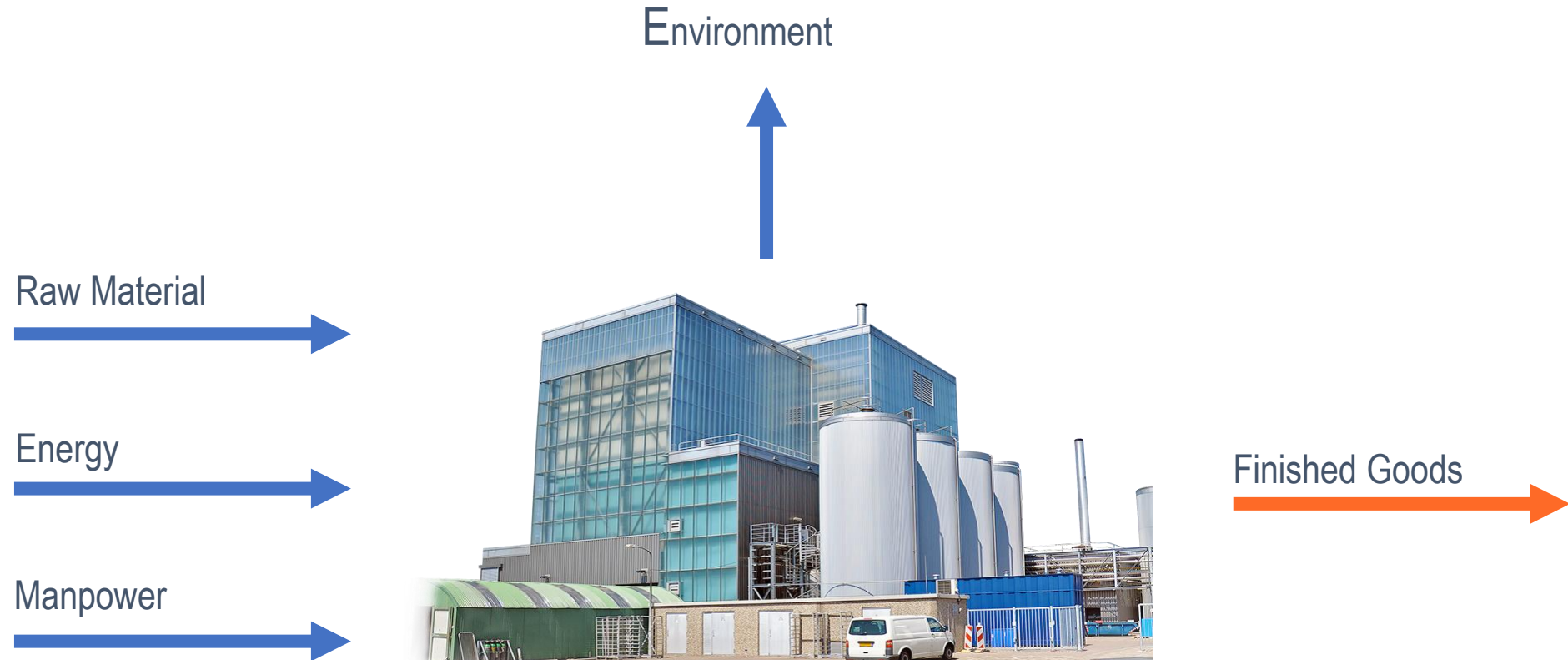
מפעל חכם יודע
לרתום טכנולוגיות חדשות
בכדי לשפר את הנצילות של נכסיו





**CONTEL
TECHNOLOGIES**
for Smart Manufacturing

הערך של קונטאל





**CONTEL
TECHNOLOGIES**
for Smart Manufacturing

THE CONNECTED ENTERPRISE

Optimized for Rapid Value Creation



Headquarters

Production

Customers

Smart Grid

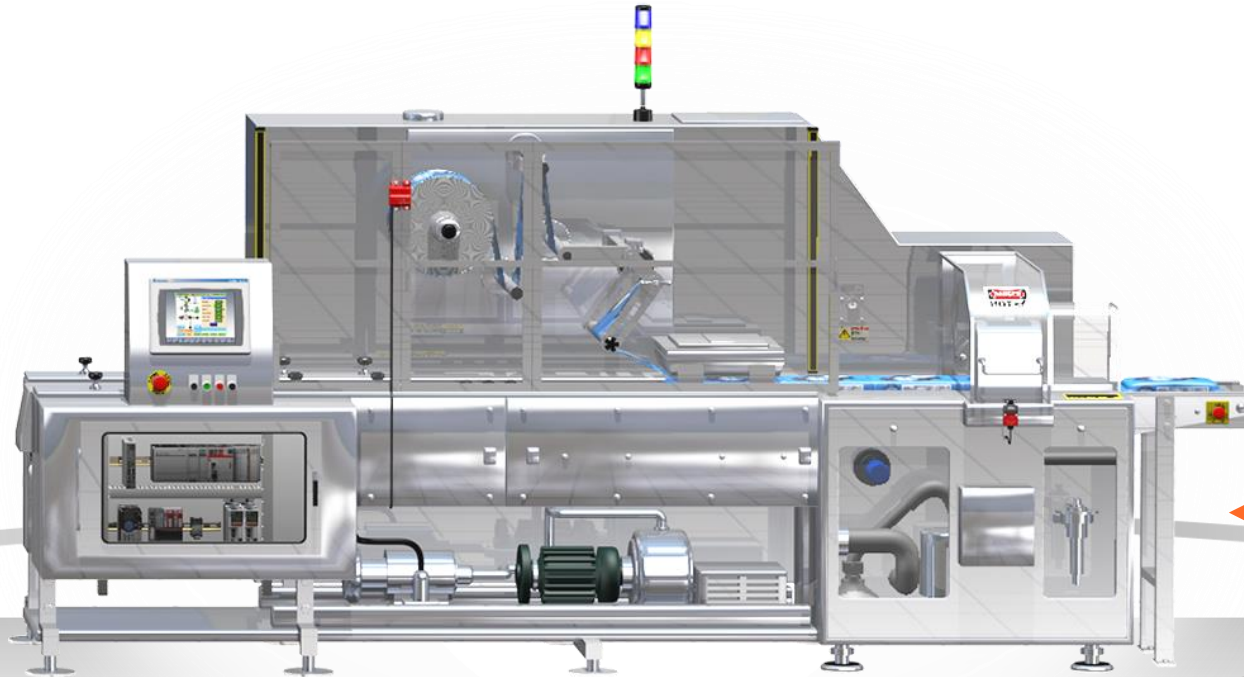
Field-Based Assets

Distribution Center

Supply Chain

Smarter Machines & Equipment

Real-time Data
Voltage, Kwh, Running Time,
Temperature



Information

CONTEXTUALIZATION
Energy/Product, OEE

Knowledge

ANALYTICS
Predict bearing will fail in 10 hours

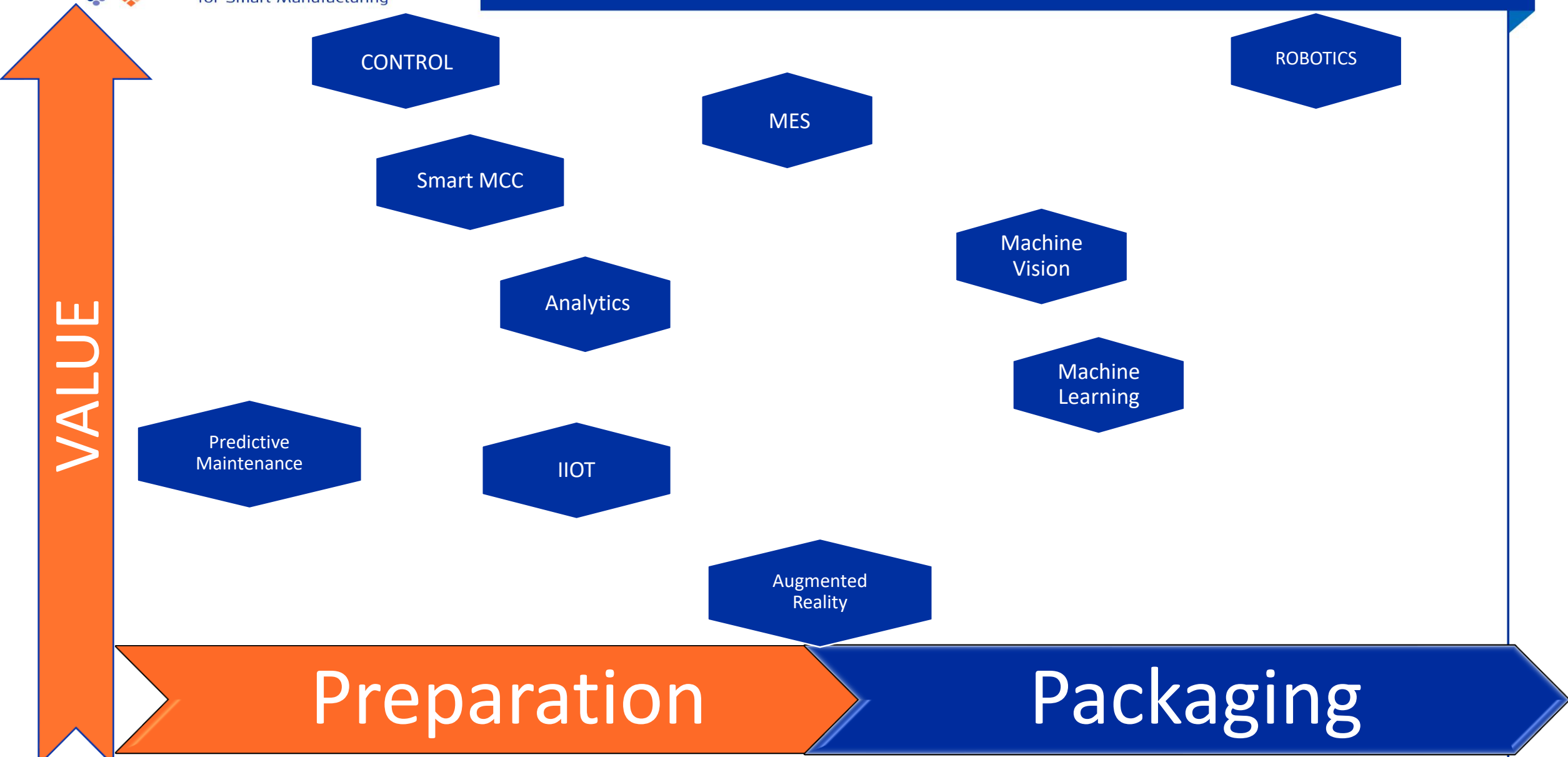
Wisdom

OPTIMIZE
More efficient process workflows



**CONTEL
TECHNOLOGIES**
for Smart Manufacturing

ערכי הטכנולוגיות עבור המפעל



CONTROL

ROBOTICS

MES

Smart MCC

Machine
Vision

Analytics

Machine
Learning

Predictive
Maintenance

IIOT

Augmented
Reality

Preparation

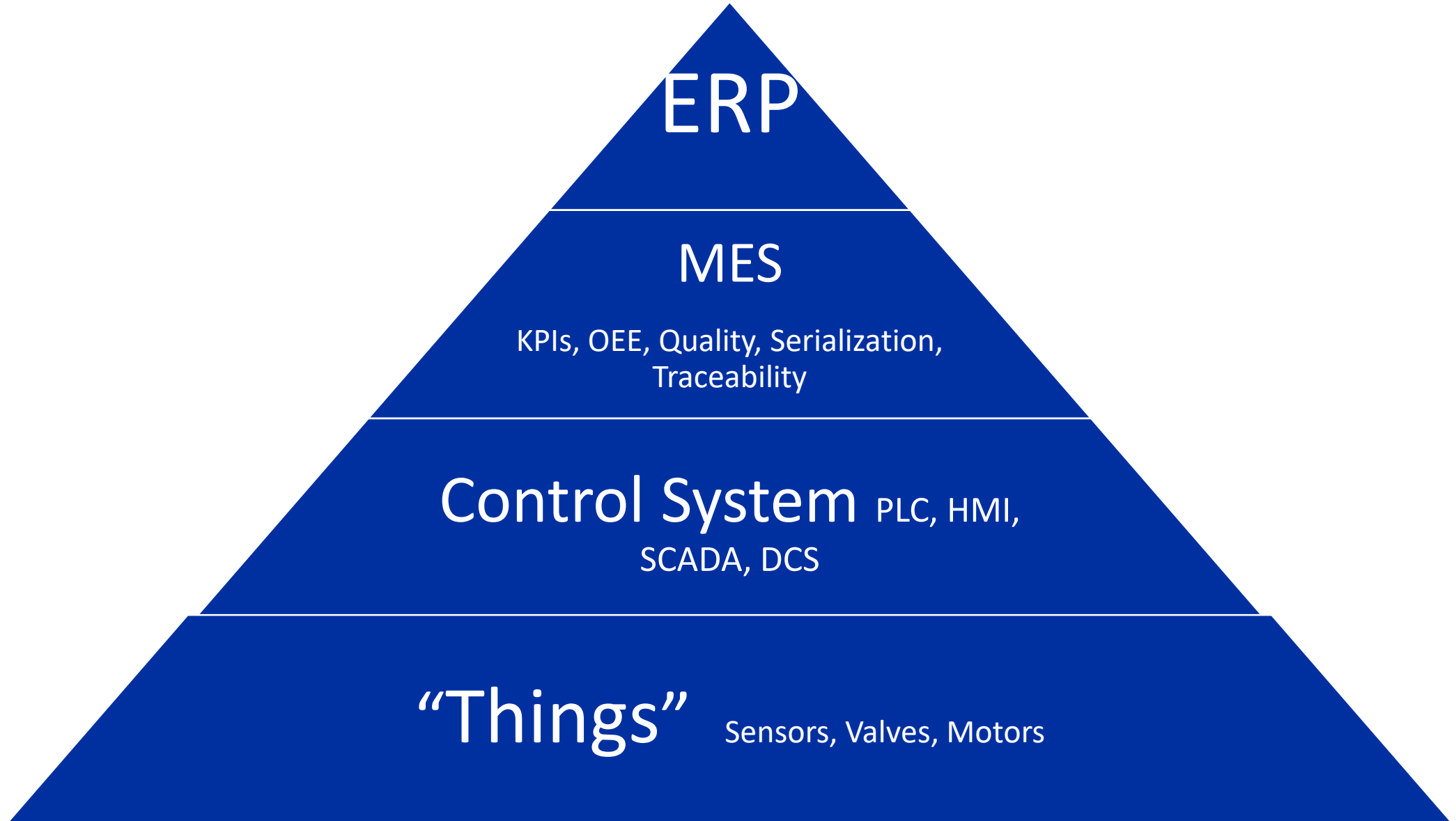
Packaging

VALUE



**CONTEL
TECHNOLOGIES**
for Smart Manufacturing

Industrial pyramid





Industry 4.0 – Analytics, Machine Learning, Predictive Maintenance

ERP

MES- KPI, OEE, Quality, Traceability, Historian

Control – PLC, HMI, SCADA, DCS

“Things” Sensor, Valves, Motors



**CONTEL
TECHNOLOGIES**
for Smart Manufacturing

ERP

MES- KPI, OEE, Quality, Traceability, Historian

Control — PLC, HMI, SCADA, DCS

“Things” Sensor, Valves, Motors

Industry 4.0 – Analytics, Machine Learning,
Predictive Maintenance



**CONTEL
TECHNOLOGIES**
for Smart Manufacturing

מערכת קובוטית למשטוח לגובה

